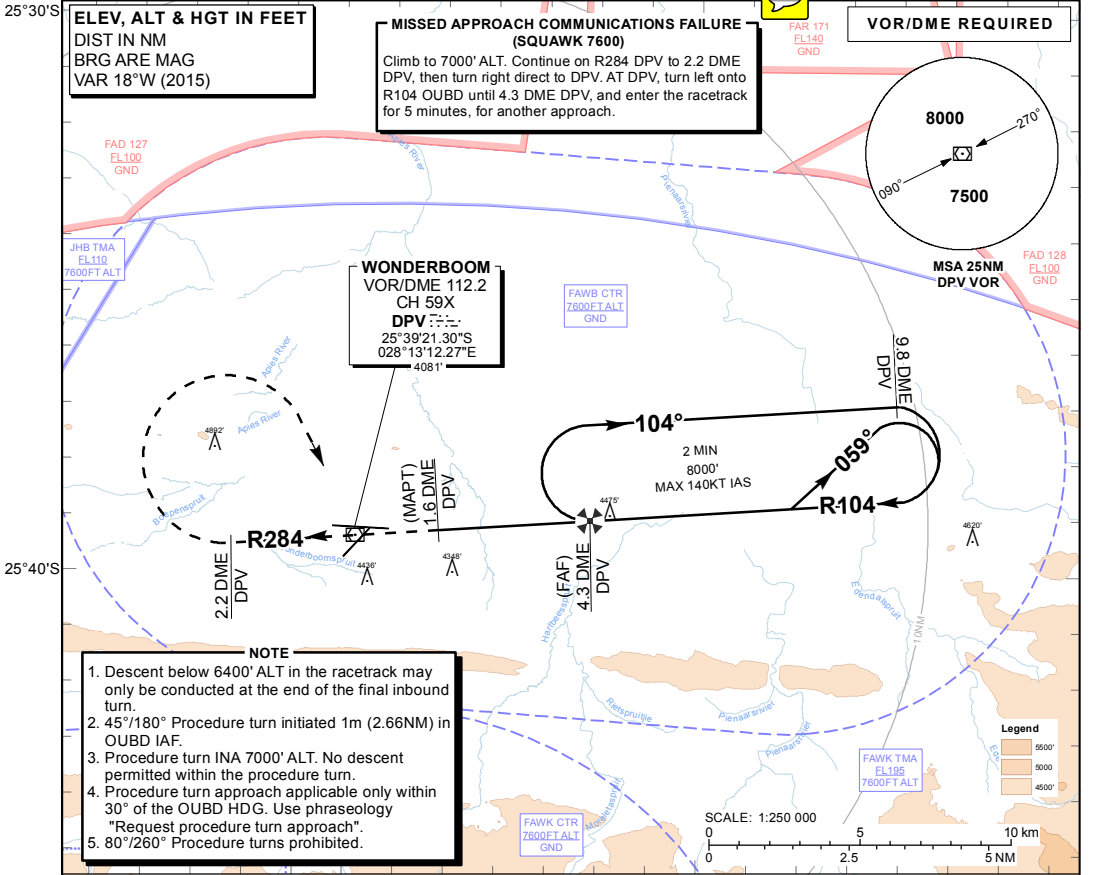


INSTRUMENT APPROACH CHART - ICAO **AERODROME ELEV 4095'**
HEIGHTS RELATED TO THR RWY 29 - ELEV 4095'

WONDERBOOM TWR: 118.35
 GND: 120.60

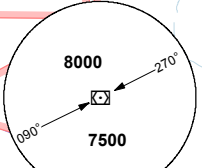
PRETORIA (WONDERBOOM) VOR RWY 29
CAT A - B



MISSED APPROACH COMMUNICATIONS FAILURE (SQUAWK 7600)
 Climb to 7000' ALT. Continue on R284 DPV to 2.2 DME DPV, then turn right direct to DPV. AT DPV, turn left onto R104 OUBD until 4.3 DME DPV, and enter the racetrack for 5 minutes, for another approach.

ELEV, ALT & HGT IN FEET
 DIST IN NM
 BRG ARE MAG
 VAR 18°W (2015)

VOR/DME REQUIRED



WONDERBOOM VOR/DME 112.2 CH 59X
DPV
 25°39'21.30"S
 028°13'12.27"E
 4081'

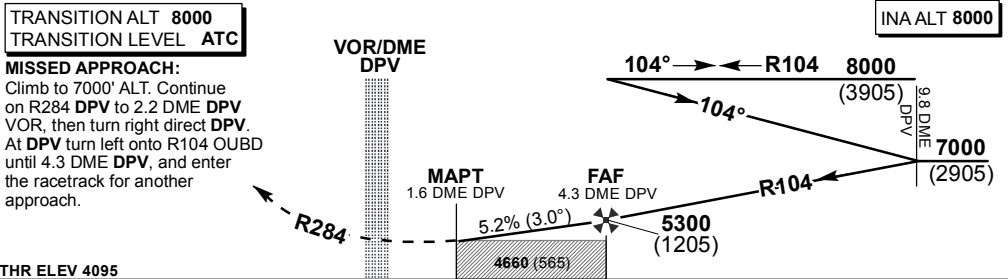
FAWB CTR
 7800' ALT
 GND

MSA 25NM
 DPV VOR

FAD 128
 FL100
 GND

- NOTE**
1. Descent below 6400' ALT in the racetrack may only be conducted at the end of the final inbound turn.
 2. 45°/180° Procedure turn initiated 1m (2.66NM) in OUBD IAF.
 3. Procedure turn INA 7000' ALT. No descent permitted within the procedure turn.
 4. Procedure turn approach applicable only within 30° of the OUBD HDG. Use phraseology "Request procedure turn approach".
 5. 80°/260° Procedure turns prohibited.

Distance from THR 29	4.3	4	3	2	1	
ADVISORY ALT (HGT)	5300 (1205)	5210 (1115)	4900 (805)	4590 (495)	4280 (185)	



THR ELEV 4095
 NM to/from THR RWY 29

	OCA (H)	A		B		GS									
		VOR/DME	RVR	ALS OUT	4660 (565)	4660 (565)	FAF to THR	Rate of descent (5.2%)	FPM	415	519	623	727	831	935
Straight-in Approach	VOR/DME	4660 (565)			4660 (565)										
	RVR		1500m		1500m										
	ALS OUT		1500m		1500m										
Circling			4980 (885)		5260 (1165)										

- NOTE:**
1. CAT A & B only.
 2. MAPT before THR at 1.6 DME DPV.
 3. Racetrack limited by 9.8 DME DPV.
 4. No turns prior MAPT.
 5. Circle to land at the discretion of the pilot in command.

CHANGE: New Procedure